

Ref: ES170287

Price: 631,000€



 **Town House**

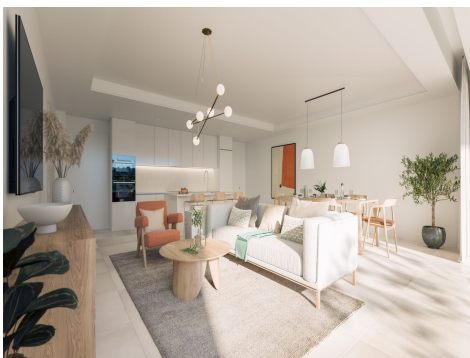
 **El Chaparral**

 **3**

 **3**

 **140m<sup>2</sup> Build Size**

"Evergreen Homes has an ideal location, on the front line of the El Chaparral golf course, a few meters from the beach of the same name and very close to the busy and lively leisure area of Cala de Mijas and the urban center from Fuengirola. A safe bet to enjoy 100% of the spirit of the Costa del Sol. In addition to the golf course attached to the development, more than 70 courses dot the Costa del Sol and are available to enjoy days with friends practicing your favorite sport. The existence of international schools, health centers and a wide variety of shopping centers is a plus for a soli...(Ask for More Details!)"





UK +44 333 022 0135

Email: [info@1casa.com](mailto:info@1casa.com)

Web: [www.1casa.com](http://www.1casa.com)

"Evergreen Homes has an ideal location, on the front line of the El Chaparral golf course, a few meters from the beach of the same name and very close to the busy and lively leisure area of Cala de Mijas and the urban center from Fuengirola. A safe bet to enjoy 100% of the spirit of the Costa del Sol. In addition to the golf course attached to the development, more than 70 courses dot the Costa del Sol and are available to enjoy days with friends practicing your favorite sport. The existence of international schools, health centers and a wide variety of shopping centers is a plus for a solidly established and highly demanded area. 20 minutes away is the vibrant and sophisticated city of Marbella, with everything you can imagine to enjoy the authentic Mediterranean lifestyle. Evergreen Homes is a closed residential complex, made up of 80 townhouses with 3 and 4 bedrooms, with a modern, functional and innovative design that blends into its beautiful natural surroundings. Evergreen Homes is a closed residential complex, made up of 80 townhouses with 3 and 4 bedrooms, with a modern, functional and innovative design that blends into its beautiful natural surroundings. In addition to having landscaped spaces, leisure areas and an outdoor community pool within the same development, you can enjoy access to the exclusive sports and leisure center attached to the development, which has paddle tennis courts, a SPA, a gym, etc. Likewise, the south and southwest orientation of its homes gives it the luxury of making the most of natural light as well as enjoying the suggestive marine environment of the Mediterranean coast. The common areas of Evergreen Homes have been conceived and designed taking into account the commitment to sustainability, with a wide variety of equipment and offering top quality facilities. The parking spaces will have charging pre-installation for electric vehicles according to current regulations."

UK +44 333 022 0135

Email: [info@1casa.com](mailto:info@1casa.com)

Web: [www.1casa.com](http://www.1casa.com)