

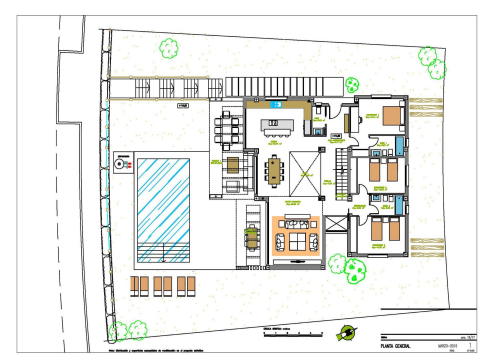
Ref: D3934666

Price: 1,610,000€



-  **Villa**
-  **Malaga**
-  **4**
-  **3**
-  **361m<sup>2</sup> Build Size**
-  **Pool: Yes**

This modern development offers 3 and 4 bedroom villas with large terraces. THE COMPLEX We help you to turn your dreams into a reality by providing you the realisation of the ideal house. We offer you the opportunity of getting one of our magnificent villas of high quality, these are designed to enjoy unique and natural surroundings. It is characterised by a privileged location in the heart of Málaga, the meticulous care of every single aspect is what makes for a unique and unrepeatable promotion. The promotion offers different housing solutions which can be adapted to the needs of every ... (Ask for More Details!)





UK +44 333 022 0135

Email: [info@1casa.com](mailto:info@1casa.com)

Web: [www.1casa.com](http://www.1casa.com)

This modern development offers 3 and 4 bedroom villas with large terraces. THE COMPLEX We help you to turn your dreams into a reality by providing you the realisation of the ideal house. We offer you the opportunity of getting one of our magnificent villas of high quality, these are designed to enjoy unique and natural surroundings. It is characterised by a privileged location in the heart of Málaga, the meticulous care of every single aspect is what makes for a unique and unrepeatably promotion. The promotion offers different housing solutions which can be adapted to the needs of every client, you can choose between a wide range of options. It is a modern and functional project with 3 or 4 bedroom houses where the large terraces are the leading lights. This is a design that has been studied to satisfy the current needs of the market and its main aim is to ensure comfort, well-being and quality in every aspect and finishing. Moreover, a professional team is available if you want know more about the property. The design of the houses is modern, clean, and minimalist, its straight and angled lines along with the volumes can create unique locations that are characterised by plays of light that project a beneficial light for our lives, we are talking about areas that gift us silence. The houses are designed to make the most efficient possible use of natural light, they face south, and they have large windows extending from the floor to the ceiling, so that we can bring the living-room with terrace, the garden and excellent sea views together. Every house becomes an example of avant-garde and distinction. Each house consists of a large living room that acts as the backbone and the heart of the house. Spacious and different accommodations, suite bedrooms, an impressive private porch with direct exits from the living room and the kitchen and a large private garden with direct access to the pool provide an architectural mix of surfaces that adds personality and uniqueness to your property. BUILD SIZES FROM 361m<sup>2</sup> TO 407m<sup>2</sup> | PRICES FROM €1,610,000

The house is distributed as follows: GROUND FLOOR: Each house has a direct private access. The entrance hall is the main axis to enter the house, it integrates us in its big and bright living room with large windows, creating an indoor-outdoor continuity aided by clean lines that provide light and peace to the house. On the same floor we can see a large and fantastic kitchen from which we can enter to the attractive outside porch with a paved surface depending on the type of house. In practice, it becomes an open-air dining room, extending the space of the already spacious living-room. The rest of the accommodations on this floor present different distributions, from one to three bedrooms. The WC is distinguished by its quality, with all the features focused on comfort. The house also has a private garden up to 225m<sup>2</sup> on the ground floor, depending on the type of build, and is divided into two areas: a paved area with garden and a pool with a chill-out zone. TOP FLOOR: Master bedroom that has a large dressing area and an en-suite bathroom. You can enter to the toilet through a glass door, designed specially to provide sea views, in addition, the bedroom also has a large private terrace that is south orientated. According to the typology, we have houses of two or three bedrooms and one, two or more bathrooms. All of them are south facing and provide sea views. BASEMENT: It has three big parking spaces (depending on the type of house) and a multipurpose area that could be used as a cellar, office or a play area. One of the qualities of this project is the way in which the natural light enters to this area, it comes from the English-style patio design. They provide light and ventilation, turning this open-plan space into a pleasant corner with views to the garden.

THE AREA The Villas are located in a privileged environment with all kinds of services to your reach, an extraordinary well-connected area next to the new roads that link Camino de los Almendrales with the highway or the roundabout at the junction of urbanizations El Mayorazgo and Pinos del Limonar, apart from other important communication routes. This enables the access to any point in the city in just a few minutes. Nature, comfort and services in an exclusive and lively area. Málaga's history spans about 2,800 years, making it one of the oldest continually inhabited cities in Europe. With a population in 2020 of 578,460 people, the city is a cosmopolitan hub in the province of Andalusia. Interestingly, significant people such as

the painter and sculptor Pablo Picasso,

Hebrew poet and Jewish philosopher Solomon Ibn Gabirol and the actor Antonio Banderas were all born in Málaga. As regards transportation, Málaga is served by the

Email: [info@1casa.com](mailto:info@1casa.com)

Web: [www.1casa.com](http://www.1casa.com)