

Ref: R4252744\_NDR

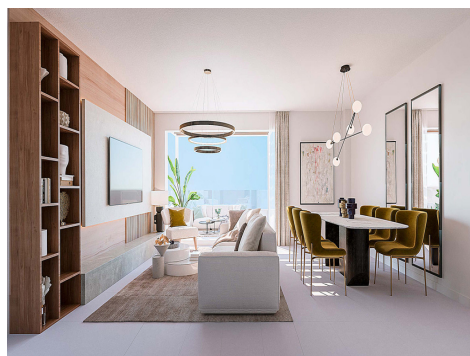
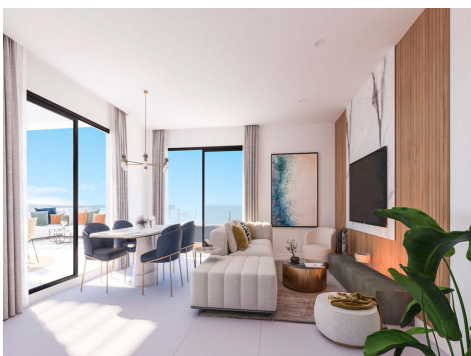
Price: 829,000€



-  **Townhouse**
-  **Benalmadena**
-  **3**
-  **2**
-  **164m<sup>2</sup> Build Size**
-  **72m<sup>2</sup> Plot Size**
-  **Pool: Yes**

New Development: Prices from 829,000 € to 829,000 €. [Beds: 3 - 3] [Baths: 2 - 2] [Built size: 164.00 m2 - 164.00 m2]

This development is an exclusive private development located in a privileged location in Benalmádena. Thanks to its elevated location, all homes will enjoy incredible panoramic views of the sea and the coast. The terraced layout of this development overlooking the Mediterranean Sea means that each and every one of the 49 apartments and 2 townhouses enjoys bright rooms thanks to natural light.





UK +44 333 022 0135

Email: [info@1casa.com](mailto:info@1casa.com)

Web: [www.1casa.com](http://www.1casa.com)

New Development: Prices from 829,000 € to 829,000 €. [Beds: 3 - 3] [Baths: 2 - 2] [Built size: 164.00 m2 - 164.00 m2]

This development is an exclusive private development located in a privileged location in Benalmádena. Thanks to its elevated location, all homes will enjoy incredible panoramic views of the sea and the coast. The terraced layout of this development overlooking the Mediterranean Sea means that each and every one of the 49 apartments and 2 townhouses enjoys bright rooms thanks to natural light.