

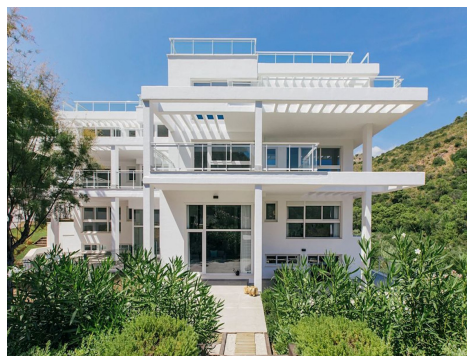
Ref: ES166048

Price: 294,000€



-  **Apartment**
-  **Benahavis**
-  **2**
-  **2**
-  **114m<sup>2</sup> Build Size**
-  **Pool: Yes**

Riverside Homes - Benahavis is a new development with spectacular penthouses and ground floor with garden located in Benahavis, next to the Guadalmina river. 2 and 3 bedroom homes with magnificent views, large living rooms with open kitchen, and extraordinary common areas with swimming pool Residential complex in the interior of the Costa de Sol, surrounded by golf courses, 15 minutes from Puerto Banús and the sea. Ground Floor Apartment – Beds/Baths 2/2 – Built 114m<sup>2</sup> – Terrace 61m<sup>2</sup> – €294.000 Ground Floor Apartment – Beds/Baths 3/2 – Built 144m<sup>2</sup> – Terrace 139m<sup>2</sup> – €348.000 Middle Floor ... (Ask for More Details!)





UK +44 333 022 0135

Email: [info@1casa.com](mailto:info@1casa.com)

Web: [www.1casa.com](http://www.1casa.com)

Riverside Homes - Benahavís is a new development with spectacular penthouses and ground floor with garden located in Benahavís, next to the Guadalmina river. 2 and 3 bedroom homes with magnificent views, large living rooms with open kitchen, and extraordinary common areas with swimming pool Residential complex in the interior of the Costa de Sol, surrounded by golf courses, 15 minutes from Puerto Banús and the sea. Ground Floor Apartment – Beds/Baths 2/2 – Built 114m<sup>2</sup> – Terrace 61m<sup>2</sup> – €294.000 Ground Floor Apartment – Beds/Baths 3/2 – Built 144m<sup>2</sup> – Terrace 139m<sup>2</sup> – €348.000 Middle Floor Apartment – Beds/Baths 3/2 – Built 137m<sup>2</sup> – Terrace 21m<sup>2</sup> – €317.000 Middle Floor Apartment – Beds/Baths 2/2 – Built 107m<sup>2</sup> – Terrace 19m<sup>2</sup> – €338.000 Middle Floor Apartment – Beds/Baths 2/2 – Built 114m<sup>2</sup> – Terrace 74m<sup>2</sup> – €342.000 Middle Floor Apartment – Beds/Baths 3/2 – Built 137m<sup>2</sup> – Terrace 28m<sup>2</sup> – €366.500 Middle Floor Apartment – Beds/Baths 3/2 – Built 136m<sup>2</sup> – Terrace 28m<sup>2</sup> – €374.500 Middle Floor Duplex – Beds/Baths 4/3 – Built 224m<sup>2</sup> – Terrace 40m<sup>2</sup> – €418.000 Penthouse Apartment – Beds/Baths 2/2 – Built 106m<sup>2</sup> – Terrace 22m<sup>2</sup> – €347.500