

Ref: 59309

Price: 341,000€



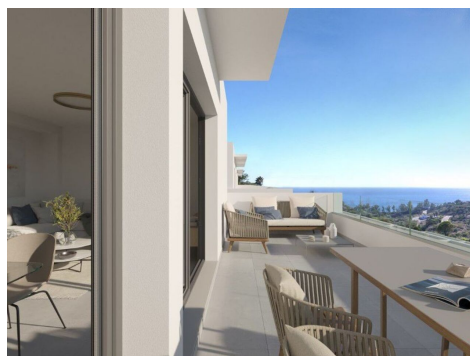
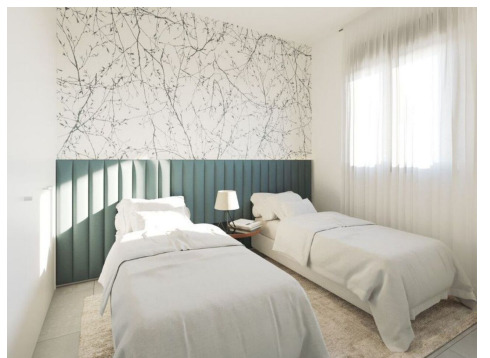
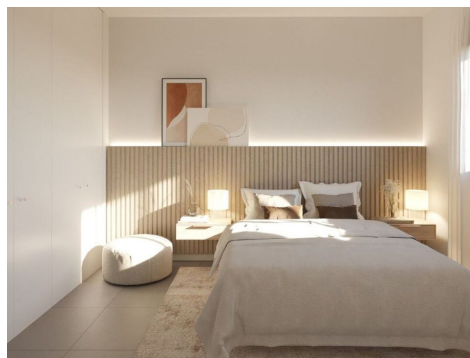
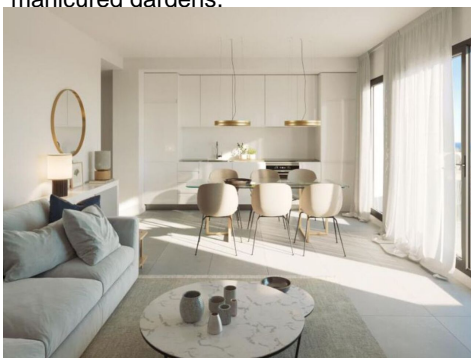
-  **Villas**
-  **Manilva**
-  **2**
-  **2**
-  **84m² Build Size**
-  **106m² Plot Size**
-  **Parking: Yes**

This outstanding project of villas with at least 2 bedrooms and 2 bathrooms, and a parking space and storage space all included. A variety of detached and semi-detached, all this and close to Sotogrande with terrific sea views.

The flow plan is actually the floor plan, as it is the epitome of smooth transitions.

Big terraces and a fully, fitted kitchen.

A dedicated club house with gym, spa, & a large infinity pool are surrounded by manicured gardens.





UK +44 333 022 0135

Email: info@1casa.com

Web: www.1casa.com

This outstanding project of villas with at least 2 bedrooms and 2 bathrooms, and a parking space and storage space all included. A variety of detached and semi-detached, all this and close to Sotogrande with terrific sea views.

The flow plan is actually the floor plan, as it is the epitome of smooth transitions.

Big terraces and a fully, fitted kitchen.

A dedicated club house with gym, spa, & a large infinity pool are surrounded by manicured gardens.