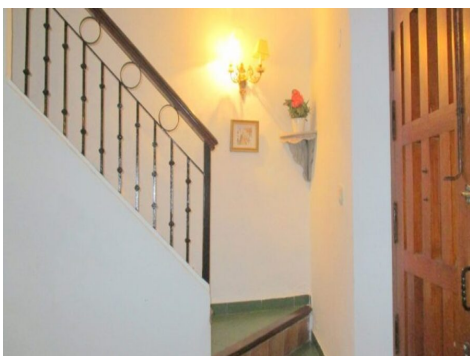
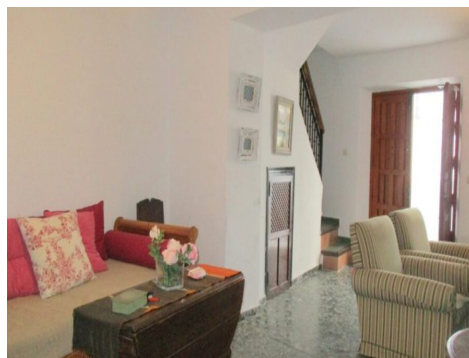


Ref: APA310

Price: 157,500€

 **Village House** **Álora** **3** **2** **158m² Build Size** **111m² Plot Size**

This attractive village house is located in a prestigious street in the centre of Álora pueblo. The accommodation extends over two levels plus there is a semi-basement level with access from both the main house and independent access from the parallel street. At street level one enters through a beautiful hand crafted wooden door into a particularly spacious reception lounge which leads through to a second sitting room/dining room and a spacious bright kitchen which hosts large windows offering views across Álora pueblo to the historic Álora castle. An attractive staircase leads to the upp...(Ask for More Details!)





UK +44 333 022 0135

Email: info@1casa.com

Web: www.1casa.com

This attractive village house is located in a prestigious street in the centre of Álora pueblo. The accommodation extends over two levels plus there is a semi-basement level with access from both the main house and independent access from the parallel street. At street level one enters through a beautiful hand crafted wooden door into a particularly spacious reception lounge which leads through to a second sitting room/dining room and a spacious bright kitchen which hosts large windows offering views across Álora pueblo to the historic Álora castle. An attractive staircase leads to the upper level which hosts two double bedrooms and a bathroom and a glorious terrace which hosts stunning views. In addition to the main living accommodation, there is also a semi-basement which currently offers 3 further rooms and a modern bathroom. From this semi-basement one can also access the small private garden which this property enjoys.

The total build size of this property is 158m² built on a plot of 111m² and the fact that it has access from two parallel streets offers great flexibility of accommodation with the possibility of developing two separate units of accommodation.