

Ref: APA7

Price: 180,000€



 **Townhouse**

 **Alora**

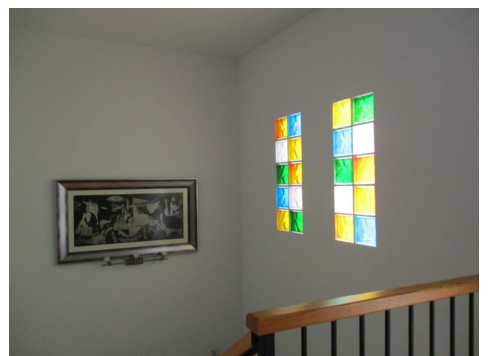
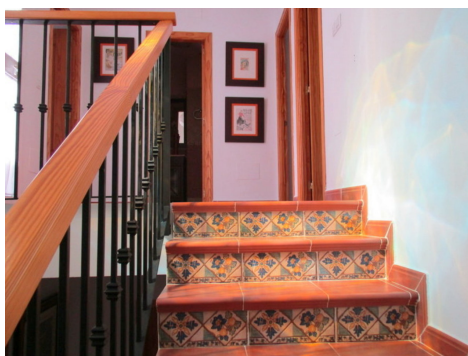
 **3**

 **2**

 **144m² Build Size**

 **135m² Plot Size**

Quality built townhouse located on the edge of Alora pueblo. This townhouse was constructed in 2004 and offers bright spacious accommodation. The accommodation is offered over two levels. At street level, there is a large living room, a very spacious bright modern fully fitted kitchen/dining room, a laundry room and a full bathroom. To the rear of the property, there is a 45 m² courtyard which hosts an outside kitchen/BBQ area and impressive views up to El Hacho mountains. An integral garage completes the accommodation on the ground floor. A wide staircase leads to the upper level which offers...(Ask for More Details!)





UK +44 333 022 0135

Email: info@1casa.com

Web: www.1casa.com

Quality built townhouse located on the edge of Alora pueblo. This townhouse was constructed in 2004 and offers bright spacious accommodation. The accommodation is offered over two levels. At street level, there is a large living room, a very spacious bright modern fully fitted kitchen/dining room, a laundry room and a full bathroom. To the rear of the property, there is a 45 m2 courtyard which hosts an outside kitchen/BBQ area and impressive views up to El Hacho mountains. An integral garage completes the accommodation on the ground floor. A wide staircase leads to the upper level which offers a large landing area, 3 double bedrooms with fitted wardrobes and a full bathroom. There is also a terrace on the upper level. Total build size 144 m2. This property is located on the edge of Alora pueblo and enjoys stunning views across to Alora pueblo and across the Guadalhorce valley. All mains services are connected. The property is offered in immaculate condition and offers the opportunity to acquire a property in a sought after location where very few such properties become available for sale.