

Ref: APA534

Price: 265,125€



 **Country Property**

 **Bermejo**

 **2**

 **2**

 **900m² Build Size**

 **8,000m² Plot Size**

 **Terrace: Yes**

 **Parking: Yes**

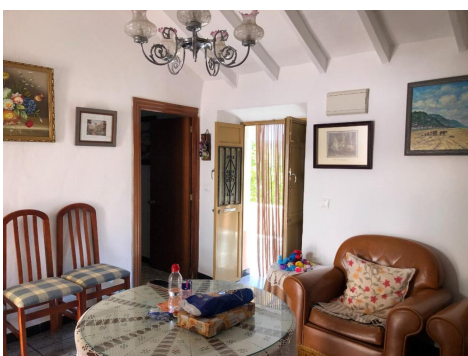
This freshly presented, 2 bedroom & 2 bathroom property offers a fabulous compromise between town and country living!

It enjoys a semi-rural location within approx. 8,000m² of olive and carob groves on the edge of Bermejo village and within walking distance of local amenities and public transport links.

Extending to approx. 90m² the accommodation is offered all on one level, comprising a welcoming reception room, a 2nd sitting room which hosts a feature fireplace, 2 double bedrooms, a kitchen with adjoining walk-in pantry and a bathroom.



The property also enjoys a very pretty patio... (Ask for More Details!)





UK +44 333 022 0135

Email: info@1casa.com

Web: www.1casa.com

This freshly presented, 2 bedroom & 2 bathroom property offers a fabulous compromise between town and country living!

It enjoys a semi-rural location within approx. 8,000m² of olive and carob groves on the edge of Bermejo village and within walking distance of local amenities and public transport links.

Extending to approx. 90m² the accommodation is offered all on one level, comprising a welcoming reception room, a 2nd sitting room which hosts a feature fireplace, 2 double bedrooms, a kitchen with adjoining walk-in pantry and a bathroom.

The property also enjoys a very pretty patio with attractive Andalucian tiles and hosting the 2nd shower room and also featuring a traditional bread oven.

To the front of the property is a glorious South facing terrace extending along the full width of the house and hosting spectacular views down the Guadalhorce valley. Ideal for “al fresco” dining and enjoying the glorious sunsets which we experience in this part of Spain throughout the year!

In addition to the main accommodation there is a separate 24m² outbuilding located a few metres from the house.

This building is currently used as a garage /store room but could possibly offer potential for exploitation as a little guest studio.

All mains services are connected including mains electricity, mains water and connection to mains sewerage and high speed internet is available.