

Ref: R4727629

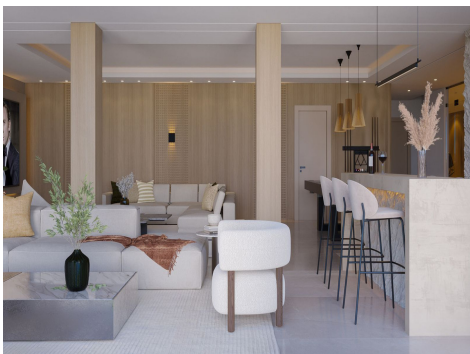
Price: 4,995,000€



-  **Villa - Detached**
-  **Atalaya**
-  **6**
-  **6**
-  **626m² Build Size**
-  **1,574m² Plot Size**
-  **Pool: Yes**

Nestled in the prestigious area of Atalaya, this frontline golf villa offers the epitome of luxury living. Currently under renovation, this is a unique opportunity to personalise your future home and create a truly bespoke sanctuary.

The ground floor boasts over 300m² of open-plan living space, filled with natural light. A spacious lounge seamlessly connects to a 100m² terrace, perfect for alfresco dining and enjoying the pool area. The state-of-the-art kitchen features Miele appliances and high-end fittings, sure to delight any culinary enthusiast. Two en-suite bedrooms, a utility room, and ...(Ask for More Details!)





UK +44 333 022 0135

Email: info@1casa.com

Web: www.1casa.com

Nestled in the prestigious area of Atalaya, this frontline golf villa offers the epitome of luxury living. Currently under renovation, this is a unique opportunity to personalise your future home and create a truly bespoke sanctuary.

The ground floor boasts over 300m² of open-plan living space, filled with natural light. A spacious lounge seamlessly connects to a 100m² terrace, perfect for alfresco dining and enjoying the pool area. The state-of-the-art kitchen features Miele appliances and high-end fittings, sure to delight any culinary enthusiast. Two en-suite bedrooms, a utility room, and a guest toilet complete this level, alongside a convenient two-car garage.

Ascend to the first floor and discover a spacious master suite with a walk-in wardrobe and an en-suite bathroom. Step out onto the 22m² terrace to soak in panoramic views of the Mediterranean Sea - a tranquil haven for relaxation and rejuvenation.

The expansive basement level offers endless possibilities. Two additional en-suite bedrooms provide ample space for guests or family, while a gym, playroom, custom bar, and private cinema cater to your leisure and entertainment needs. A staff room with a bathroom ensures complete comfort and convenience. Direct access to the covered terrace, landscaped garden, pool area, and BBQ space complete this exceptional level.

This remarkable property is ideally situated in Nueva Atalaya, a tranquil haven between Estepona and Marbella. Enjoy the serenity of golf course living while being just a short drive from the vibrant Benahavis pueblo and the stunning beaches of the Costa del Sol. The area offers a plethora of amenities, including shops, bars, and restaurants, ensuring a convenient and fulfilling lifestyle.

Don't miss this rare chance to shape your dream home. With completion expected within 10 months, you can create a personalised haven tailored to your exact specifications. Contact us today to secure your future in this luxurious golf-front villa.

UK +44 333 022 0135

Email: info@1casa.com

Web: www.1casa.com