







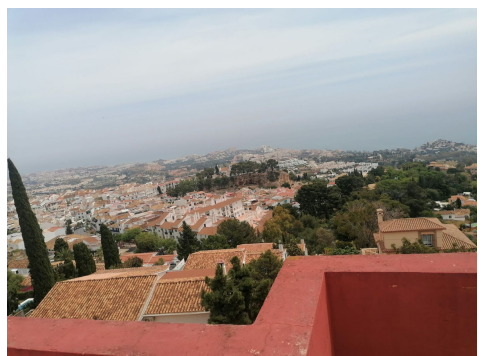
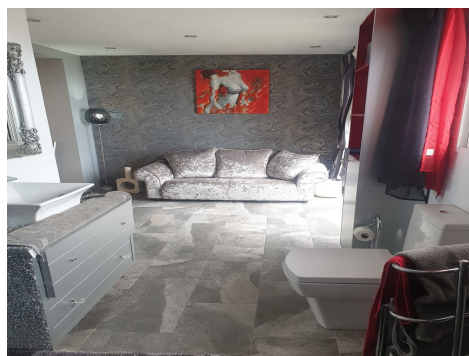
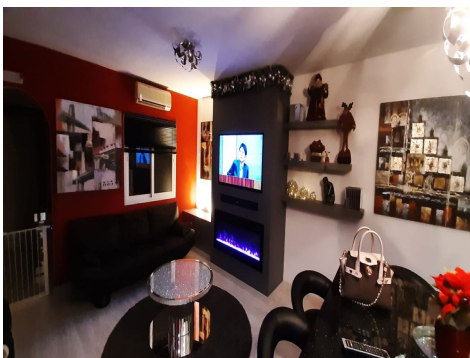
Ref: ES173936

Price: 425,000€



-  **Town House**
-  **Benalmadena Pueblo**
-  **4**
-  **3**
-  **107m<sup>2</sup> Build Size**
-  **15m<sup>2</sup> Plot Size**

\*\*\*\* We are pleased to offer for sale this spacious 4 bedroom 3 bathroom multi levelled townhouse situated in a very central location in Benalmadena Pueblo \*\*\*\* \*\*\*\* The property benefits from off road parking and several terraces off the lounge and bedrooms that open up to impressive views of the coast \*\*\*\* \*\*\*\* The basement consists of a generous sized bedroom, a dressing room area with recently refurbished bathroom leading to yet another terrace \*\*\*\* \*\*\*\* This property combines a spacious ideal family home with exceptional breath taking views of the coast as well as the central but...(Ask for More Details!)





UK +44 333 022 0135

Email: [info@1casa.com](mailto:info@1casa.com)

Web: [www.1casa.com](http://www.1casa.com)

\*\*\*\* We are pleased to offer for sale this spacious 4 bedroom 3 bathroom multi levelled townhouse situated in a very central location in Benalmadena Pueblo \*\*\*\* \*\*\*\* The property benefits from off road parking and several terraces off the lounge and bedrooms that open up to impressive views of the coast \*\*\*\* \*\*\*\* The basement consists of a generous sized bedroom, a dressing room area with recently refurbished bathroom leading to yet another terrace \*\*\*\* \*\*\*\* This property combines a spacious ideal family home with exceptional breath taking views of the coast as well as the central but quiet location \*\*\*\* \*\*\* Easy connections by car to Málaga international airport (20 minutes), Malaga centre (35minutes) and Marbella (40 minutes) \*\*\*\* \*\*\*\* Viewings highly recommended \*\*\*\*