

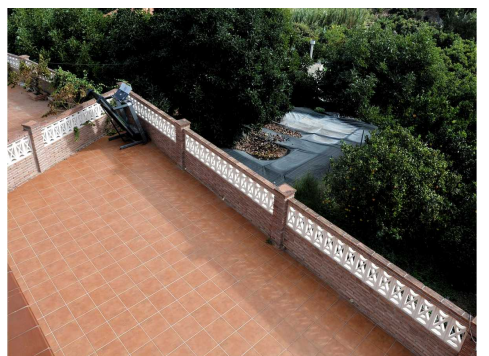
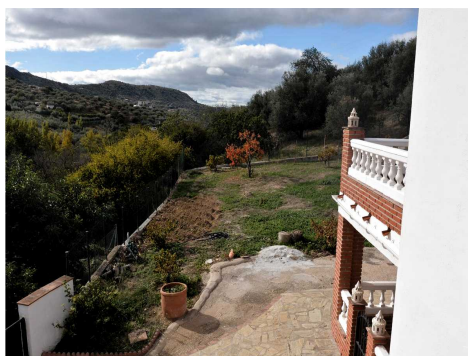
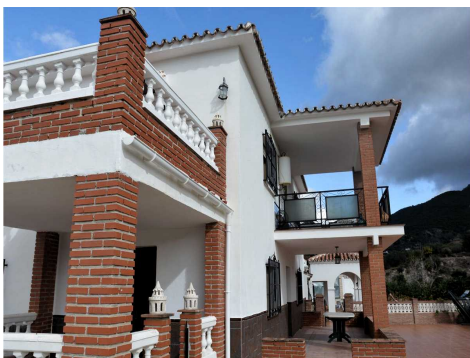
Ref: ES168321

Price: 349,000€



-  **Villa**
-  **Alcaucin**
-  **10**
-  **4**
-  **300m² Build Size**
-  **1,500m² Plot Size**

Cortijo Molina Barco offers a very large build, four self contained units and a 100m² garage placed on a plot 1.350m² level plot. With concrete access, mountain views, a quiet and private location this property offers great value for money with each unit ready to use and in good condition. It has huge rental potential and the flexibility to use the space in many different ways. Starting left to right from the main photo, it starts with a very large 100m² detached garage , currently used for storage but is large enough to be converted into a fifth unit for living. The two storey structure in th...(Ask for More Details!)





UK +44 333 022 0135

Email: info@1casa.com

Web: www.1casa.com

Cortijo Molina Barco offers a very large build, four self contained units and a 100m² garage placed on a plot 1.350m² level plot. With concrete access, mountain views, a quiet and private location this property offers great value for money with each unit ready to use and in good condition. It has huge rental potential and the flexibility to use the space in many different ways. Starting left to right from the main photo, it starts with a very large 100m² detached garage , currently used for storage but is large enough to be converted into a fifth unit for living. The two storey structure in the middle has 2 x 3 Bed Apartment on each separate level with large terraces both at the back and the front on each level. Then to the right hand side are two other apartments totalling 4 further bedrooms between them. As part of a very small hamlet the views are green, overlooking established fruit trees and up towards the National Park. Huge potential, very flexible and again a very good price as you could certainly not rebuild this m² at this price. Hot tub/ jacuzzi or above ground jet pool could be an option.