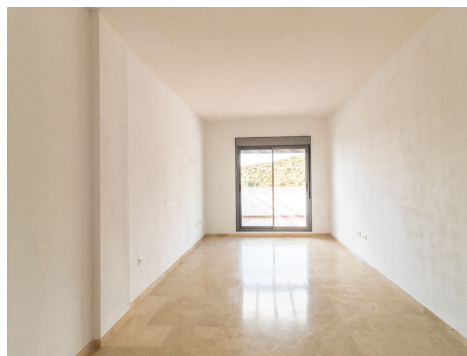
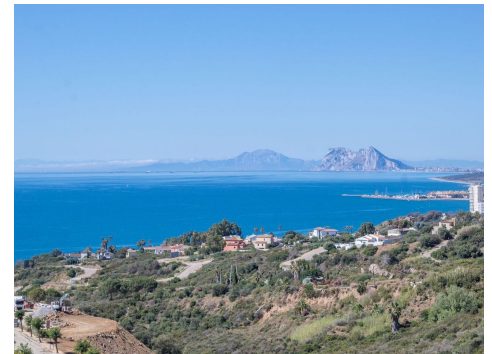


Ref: ES171524

Price: 240,000€

 **Apartment** **Manilva** **2** **2** **100m<sup>2</sup> Build Size** **Pool: Yes**

2 bedrooms penthouse with fantastic sea views. The property features a spacious entrance area, a living/dining room, a fully fitted kitchen with hatch and laundry/storage room, 2 good-sized bedrooms (both with fitted wardrobes), and 2 bathrooms (one en-suite). The south/west-facing terrace offers one of the best views of the African coast and Gibraltar. The apartment is located in a beautiful and quiet semi-altitude between La Duquesa and Sotogrande. The residential complex offers a paddle tennis court and a beautiful pool/green area, where you also benefit from the wonderful views of Gibr...(Ask for More Details!)





UK +44 333 022 0135

Email: [info@1casa.com](mailto:info@1casa.com)

Web: [www.1casa.com](http://www.1casa.com)

2 bedrooms penthouse with fantastic sea views. The property features a spacious entrance area, a living/dining room, a fully fitted kitchen with hatch and laundry/storage room, 2 good-sized bedrooms (both with fitted wardrobes), and 2 bathrooms (one en-suite). The south/west-facing terrace offers one of the best views of the African coast and Gibraltar. The apartment is located in a beautiful and quiet semi-altitude between La Duquesa and Sotogrande. The residential complex offers a paddle tennis court and a beautiful pool/green area, where you also benefit from the wonderful views of Gibraltar and the African coast. The nearest beach is only a 15-minute walk away. Supermarkets, restaurants, and all amenities are reachable in just a few minutes by car. The purchase price also includes an underground parking space and a storage room.

UK +44 333 022 0135

Email: [info@1casa.com](mailto:info@1casa.com)

Web: [www.1casa.com](http://www.1casa.com)