

Ref: R4104919

Price: 648,250€



**Villa - Semi Detached**

**Estepona**

**4**

**4**

**292m<sup>2</sup> Build Size**

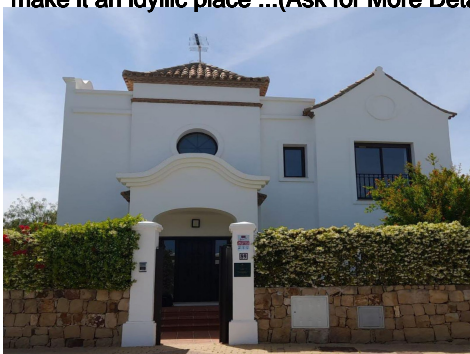
**425m<sup>2</sup> Plot Size**

**Pool: Yes**

**NEW DEVELOPMENT IN ESTEPONA WEST: AN AREA WITH A GREAT PRESENT AND A SPECTACULAR FUTURE**

Why this area rather than any other? The western area of Estepona is undoubtedly the area where the most outstanding projects of the moment are concentrated. New infrastructures flourish every day to endow this area with a spectacular future: schools, hospitals, shopping centres, sailing clubs and golf courses.

Azata Golf, designed by Sterling & Martin and built by GTM, is a PAR 71 with 18 holes. Its noble design, with spectacular views of the Mediterranean Sea and Sierra Bermeja make it an idyllic place ... (Ask for More Details!)





UK +44 333 022 0135

Email: [info@1casa.com](mailto:info@1casa.com)

Web: [www.1casa.com](http://www.1casa.com)

## NEW DEVELOPMENT IN ESTEPONA WEST: AN AREA WITH A GREAT PRESENT AND A SPECTACULAR FUTURE

Why this area rather than any other? The western area of Estepona is undoubtedly the area where the most outstanding projects of the moment are concentrated. New infrastructures flourish every day to endow this area with a spectacular future: schools, hospitals, shopping centres, sailing clubs and golf courses.

Azata Golf, designed by Sterling & Martin and built by GTM, is a PAR 71 with 18 holes. Its noble design, with spectacular views of the Mediterranean Sea and Sierra Bermeja make it an idyllic place where tranquillity is its hallmark.

This residential complex is composed of 34 semi-detached and 11 detached villas in a unique location, surrounded by the lakes and greens of the Azata Golf course.

The design of the houses is the expression of style and sturdiness. Spacious houses built to a high standard where you will enjoy the generously sized rooms distributed over two floors. The terraces with views over the golf course and lakes will add a unique experience to your daily life, as you and your family so richly deserve.

And there's still more...

- Spacious and illuminated rooms to ensure your maximum comfort and the best use of space.
- Open terraces with views to the golf course.
- Homes finished to a high standard of quality.
- Air conditioning.
- Common areas with swimming pool.
- The semi-detached houses have a basement with the same dimensions as the ground floor, bathroom with natural light.
- Sea views from most of the units.

Optional: Private individual pool

34 Semi-detached & 11 Villas Built: 283m<sup>3</sup> – 293m<sup>3</sup> Useful: 235m<sup>2</sup> – 266m<sup>2</sup>

Terrace: 45m<sup>2</sup> – 54m<sup>2</sup> Plot 400m<sup>2</sup> – 563m<sup>2</sup>

Prices: 644,250€ - 729,250€